

# SuperTrak™ Transport Platform



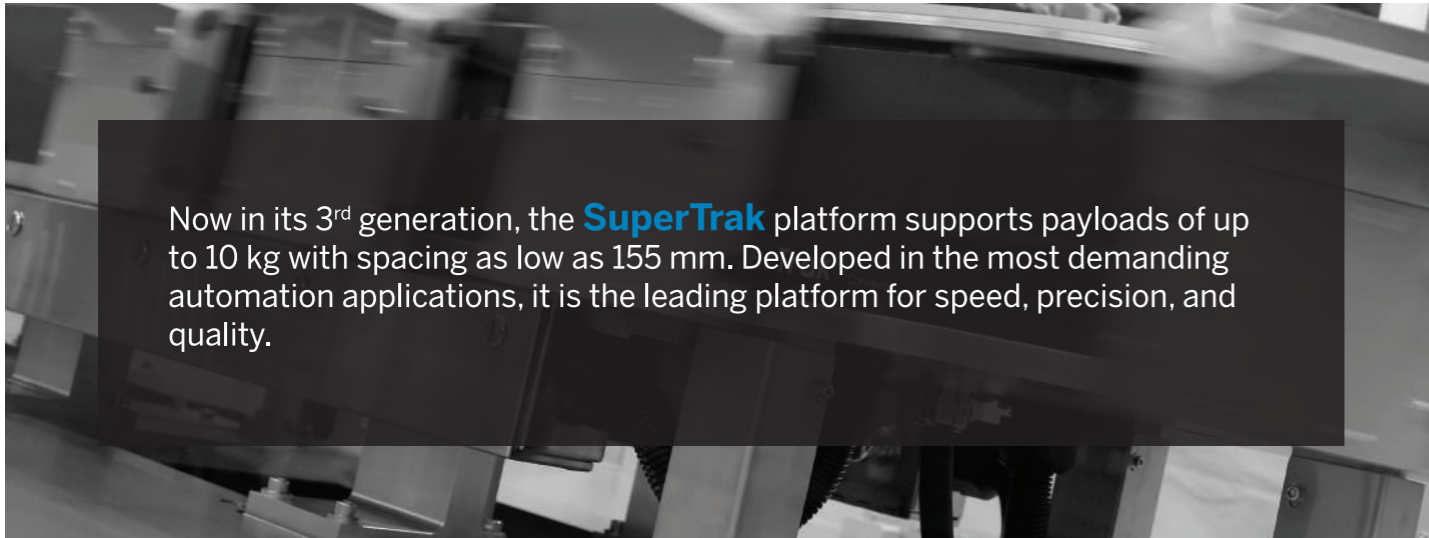
Maximizing the  
Productivity of  
your Floor Space



# SuperTrak™ Gen3 is the foundation of the world's top manufacturers

- / Eliminate unneeded tooling
- / More process time
- / Cleanroom compliant
- / Reduce system size
- / Ease of flexibility
- / Quiet

The SuperTrak system maximizes the productive space on your production floor.



Now in its 3<sup>rd</sup> generation, the **SuperTrak** platform supports payloads of up to 10 kg with spacing as low as 155 mm. Developed in the most demanding automation applications, it is the leading platform for speed, precision, and quality.

## OPTIMAL MOTION

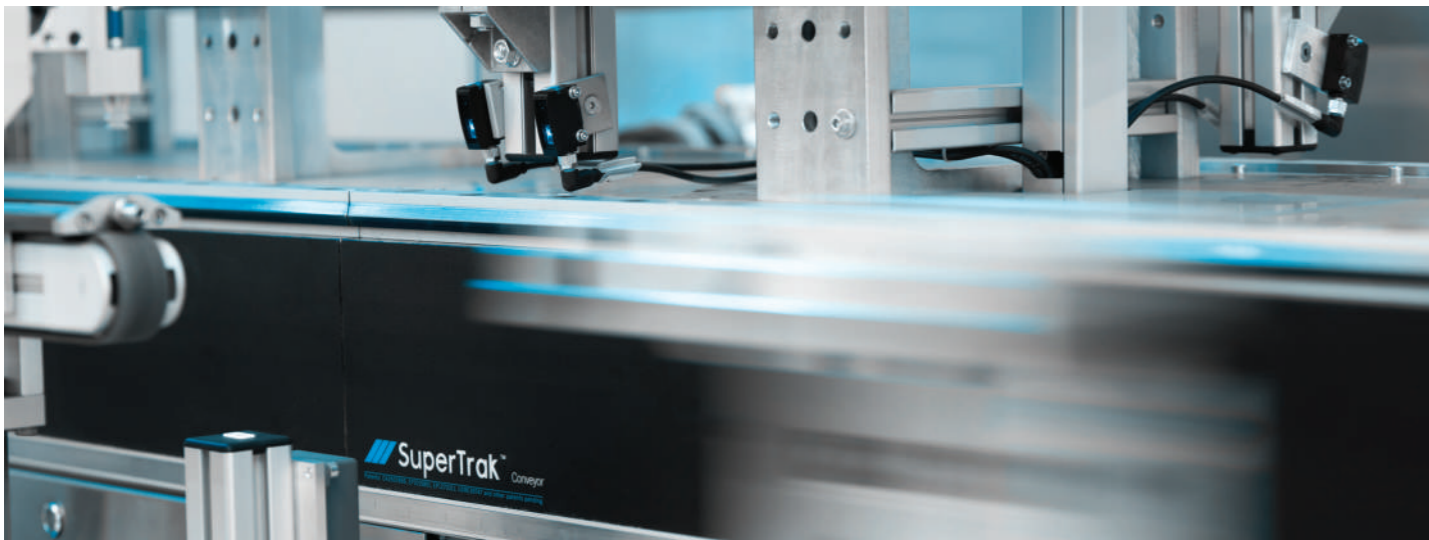
Individually controlled pallets. Synchronous or asynchronous motion in same cell.

## FLEXIBLE CONTROL

Use any PLC. Easily configured out of the box.

## PROCESS ANYWHERE

Stop and work on curves. Access to both bottom and top of work piece.

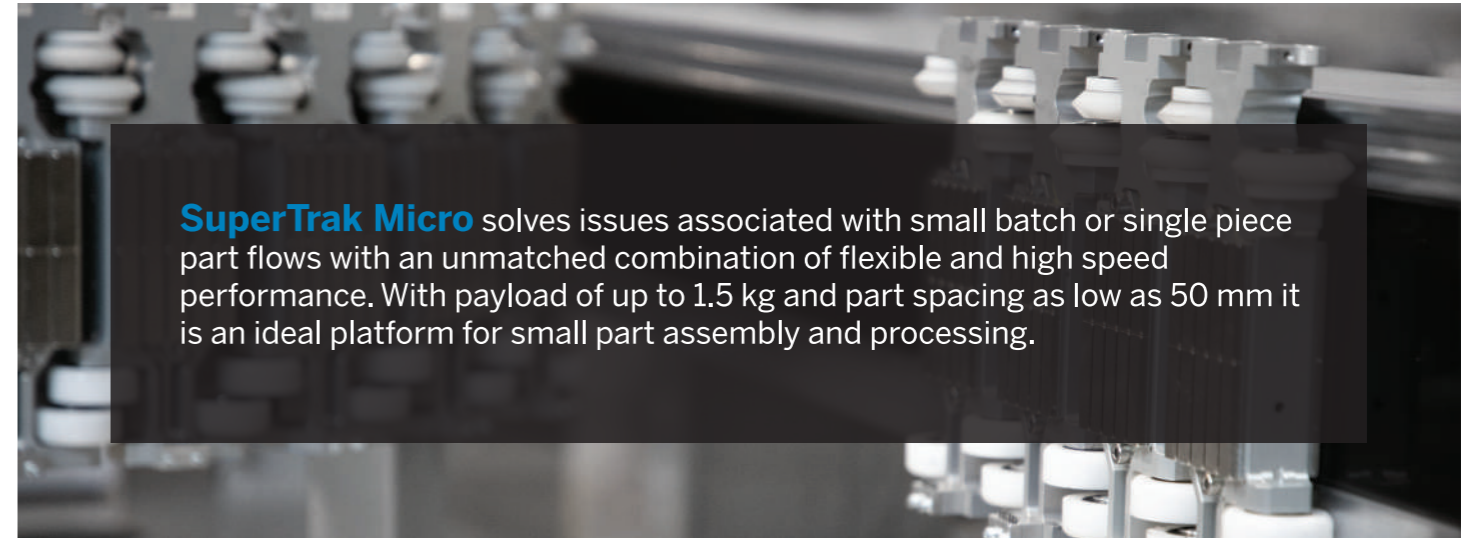


SuperTrak  
Conveyer

# New for 2018 - SuperTrak™ Micro Transport Platform

*"For 18 years SuperTrak systems have been used to automate the most demanding automation applications. The new SuperTrak™ Micro enables radical new machine concepts that rethink the serial assembly line."*

Albert Kleinikink – Product Director



**SuperTrak Micro** solves issues associated with small batch or single piece part flows with an unmatched combination of flexible and high speed performance. With payload of up to 1.5 kg and part spacing as low as 50 mm it is an ideal platform for small part assembly and processing.

## DIVIDE & MERGE ANYWHERE

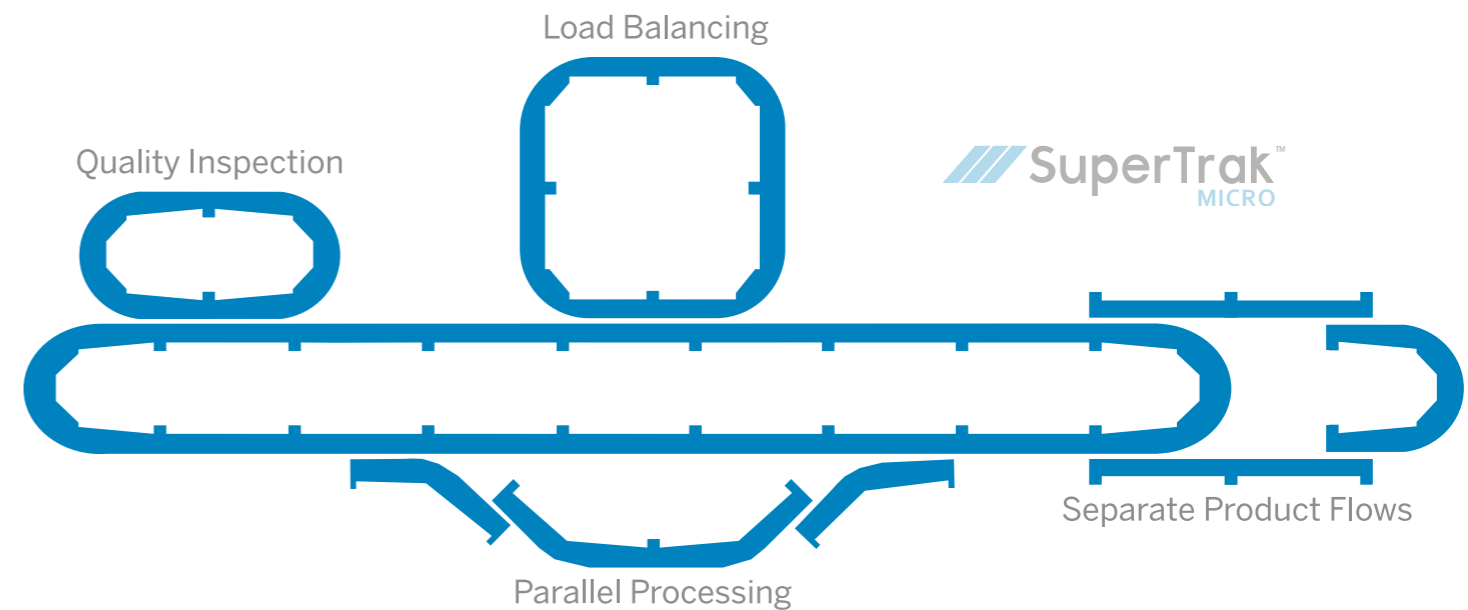
Process flexibility. Part flow separates and unites at full speed.

## CLEAN GRADE

Stainless steel housing. Supports food and medical grade applications.

## ANY FORM

Modular component. Segments can be shaped for your unique needs.



*"The SuperTrak system is a flexible automation platform that optimizes both cost and footprint by simultaneously allowing solutions to operate in either an asynchronous, synchronous or continuous motion. It is true differentiator in the marketplace."*

Mike Healy – VP, Applications & System Design

# SuperTrak™ Transport Platform Specifications

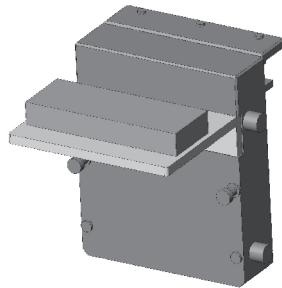
Motor Length:  
 Product Fixture Width:  
 Maximum Speed:  
 Acceleration:  
  
 Payload:  
 Communication:  
 Process on Curve:  
 Carrier Options:

## ATS SuperTrak Gen3

1000 mm  
 155-500 mm  
 4 m/s  
 1 g with 10 kg payload  
 4 g with 1 kg payload  
 10+kg per pallet\*\*  
 Ethernet/IP, PROFINET, discrete I/O\*\*\*  
 Yes, full control  
 Standard mover configuration with  
 2 or 3 magnet array options

## ATS SuperTrak Micro\*

660 mm  
 50-155 mm  
 4 m/s  
 1.5 g with 1.5 kg payload  
 5 g with 0.25 kg payload  
 1.5+kg per shuttle\*\*  
 Ethernet/IP, PROFINET, discrete I/O\*\*\*  
 Yes, full control  
 Standard mover configuration with  
 50 or 100 mm magnet array options



As a **world leading** automation company, we're never satisfied.

We continue to push, innovate, and use **SuperTrak** systems in ways never imagined.

Contact us at [SuperTrak@atsautomation.com](mailto:SuperTrak@atsautomation.com)

\* SuperTrak™ Micro will not be available for sale in the United States until after September 2018.  
 \*\* Higher payloads possible. Contact ATS with application details.  
 \*\*\* Other protocols are possible. Contact ATS if other protocols are desired.



[www.atsautomation.com](http://www.atsautomation.com)

© 2018 ATS and other designated trademarks are trademarks of ATS Automation Tooling Systems Inc. All rights reserved. Any third party trademarks referenced herein are the property of their respective owners.

